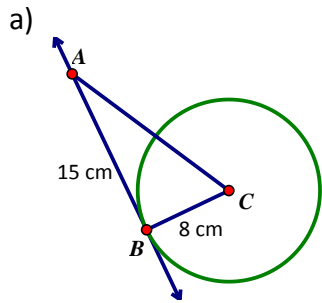
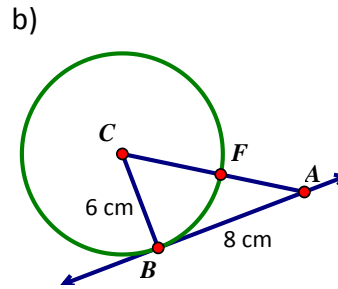


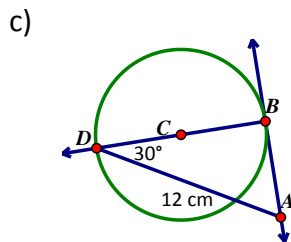
1. Solve for the missing information, given the \overleftrightarrow{AB} is a tangent line to circle C.



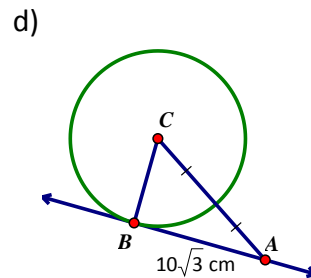
AC = _____



FA = _____

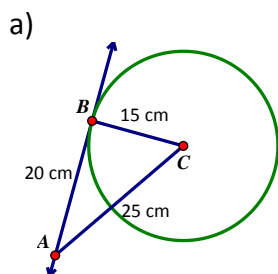


CB = _____ (E)

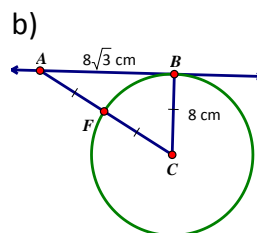


CB = _____ (E)

2. Determine if the \overleftrightarrow{AB} is a tangent line or not.

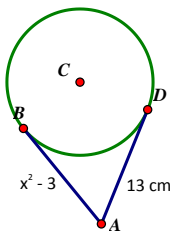


Yes or No



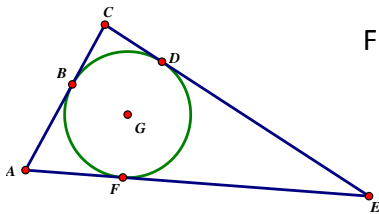
Yes or No

3. Solve for x (\overline{AB} and \overline{AD} are tangent lines)



4. Solve for the missing information (Lines that appear to be tangent are tangent.)

AC = 18 cm, CE = 30 cm & AF = 10 cm



FE = _____

5. Given that \overleftrightarrow{AB} is tangent to circle C and EA = 10 cm and AB = 12 cm, determine CB. (Hint: Label the two radii with x)

